



For
SIGN
GRAPHICS

Roll-to-Roll LED-UV Curable Inkjet Printer

UJV100-160



NEW! Newly developed UV LED Inks LUS-190

Mimaki LUS-190 is an environmentally-friendly ink that offers three configurations to suit your business needs.

The six colours of C, M, Y, K, W, Cl (*) are prepared to be able to choose one combination from three ink sets (CMYK, CMYK + W, CMYK + WCl) to suit your job. The selection of white ink of high density and opacity and the glossy clear ink are suitable for a wide range of applications: the printability on transparent / coloured media and the varnished print with high design properties.

In addition, our inks have acquired "GREENGUARD Gold certification", which is guaranteed to be suitable for schools and medical institutions based on the strictest chemical substance diffusion standards in the world. This ink generates almost no VOC (*2)(*3), the cause of photochemical oxidant generation, and is designed to reduce load to the global environment.

*1: Clear ink will be available at a later date. *2: VOC=Volatile organic compounds
*3: No volatile organic compounds are generated after UV curing by our internal investigation, but may occur very slightly before curing.



Specifications

| Item | UJV100-160 | |
|----------------------------|--|---|
| Print head | On-demand piezo head (2 staggered layout) | |
| Print resolution | 360 dpi, 720 dpi, 900 dpi, 1200 dpi | |
| Ink | Type | UV curable ink "LUS-190" (C,M,Y,K,W,CL) |
| | Colour | CMYK / CMYKW / CMYKWCL |
| | Capacity | 1L (Bottle supply) |
| Maximum printable area | 1,610 mm | |
| Maximum media width | 1,620 mm | |
| Media thickness | 1.0 mm or less | |
| External diameter of media | Φ 250 mm or less | |
| Media weight | 45 kg or less | |
| Interface | USB 2.0 / Ethernet 1000BASE-T | |
| Power | Single-phase AC 100-120 V/200-240 V ±10 % 50/60 Hz ± 1 Hz | |
| Power consumption | AC 100 V : 1.44 kW ore less / AC 200 V : 1.92 kW or less | |
| Operational environment | Temperature: 20 - 30 degC Humidity: 35 - 65%Rh (without condensation) | |
| Dimensions (W x D x H) | 2,775 x 700 x 1,475 mm | |
| Weight | 167 kg or less | |

Supplies

| Colour | Item code | Remarks |
|-----------|-------------|-----------|
| Cyan | LUS19-C-BA | 1L bottle |
| Magenta | LUS19-M-BA | |
| Yellow | LUS19-Y-BA | |
| Black | LUS19-K-BA | |
| White | LUS19-W-BA | |
| Clear (*) | LUS19-CL-BA | |

* Clear ink will be available at a later date.

Software

Raster Link 7*

Functions with ultimate usability

- New HARLEQUIN RIP core for more accurate handling of PDF files with drop shadows and transparencies
- Up to 25% faster processing of complex PDF files
- Variable Data Printing to easily create a series of prints with dynamic variations
- Registering "favorites" in the preferences to shorten operation time

* Available from February 2021

Ethernet supported!

Create a free and efficient working environment
e.g.
Editing print data on an office PC and send the data to print directly to a printer at the work site



Expert Printing Made Easy
Low Cost, High Return



Inks and substrates:

- Please note that properties and adhesion, weather resistance, etc. of ink and substrates can vary. Please test materials before printing.

Safety notice:

- These printers produce UV radiation. To protect your health, please observe the following guidelines carefully:
- Do not look directly into the UV light source, or expose your skin (such as your hands) directly to the UV light source.
 - Depending upon the print mode, some VOCs could be emitted from printed area not yet cured and hardened.
 - In addition, please read and follow the instructions and guidelines of the manual carefully.

• Some examples shown in this catalogue are artificial renderings. • Specifications, designs and dimensions shown in this catalogue may be subject to change without notice for technical improvements. • The corporate and merchandise names in this catalogue are the trademarks or registered trademarks of the respective corporations. • Inkjet printers use extremely fine dots, so colors may vary slightly after replacement of print heads. • Also note that when using multiple printer units, colours could vary slightly from one unit to another due to slight individual differences. • Please note that descriptions and data in this catalogue are as of April 2020.

Mimaki Europe B.V.
Stammerdijk 7E, 1112 AA Diemen, the Netherlands
Tel. : +31 20 4627640
Mail : info@mimakieurope.com
Web : www.mimakieurope.com
Twitter : @MimakiEurope
Instagram : @mimaki_europe

hybrid
Hybrid Services Ltd.
No 3, Gateway, Crewe, CW1 6YY
Tel : 01270 501900
Mail : info@hybridservices.co.uk
Web : www.hybridservices.co.uk
Twitter : @hybridservices
Instagram : @hybridservices





Ready to GO!

Fully-equipped with the latest functions for Mimaki Quality

Advanced Mimaki print technology for high image quality, stable operation, high productivity, and improved usability

UJV100-160

Reliable functions of UJV100-160 for Mimaki Quality

DAS (Dot Adjustment System) **NEW!**

DAS is a new feature that automates conventional dot placement (dot position and feeding correction) for maximum image quality, saving operators time and reducing manual errors.

After changing media and printing conditions, the ink dot position and media feeding amount must be adjusted accordingly. The new DAS function automatically does this, eliminating the need for manual labor and reducing the possibility of manual errors.*1

DAS
DAS prints a dedicated pattern onto the media, which is then read by the sensor mounted on the carriage to automatically adjust:
- Dot position (Dot jetting position at the bi-direction)
- Feeding amount (Media feeding amount)

* 1 : DAS may not be able to automatically adjust some media.



Improper dot position Overlap/Black streaks (Insufficient feeding amount) Gap/White streaks (Excessive feeding amount)

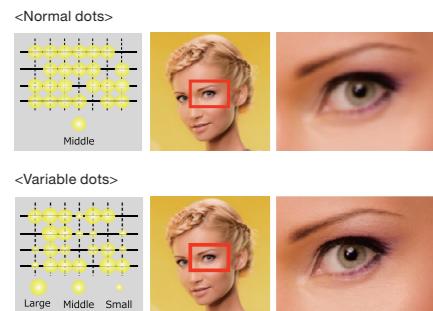


Proper dot position and feeding amount

Minimum ink dot size of 4pl

Beautiful print results without a grainy appearance

Three different ink dot sizes ensure fantastic image quality without a grainy appearance.

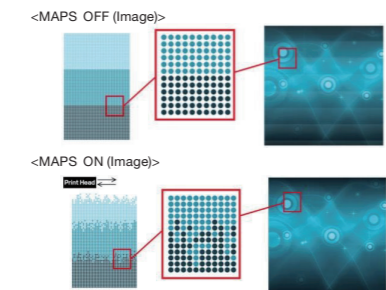


Dots are combined with the minimum size of 4pl to enable smooth colour printing with less granular feeling.

"MAPS4" supported

(Mimaki Advanced Pass System)
Banding reduction function

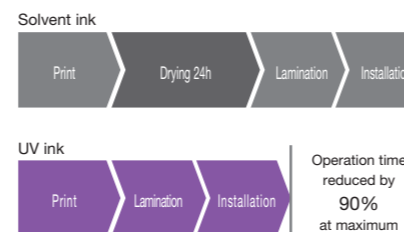
By printing the border of the path in a gradation tone, banding (horizontal stripes), uneven colour, and glossy stripes are reduced to achieve smooth printing.



Based on printing conditions such as media/ink type and resolution, the most suitable gradation pattern is automatically selected and printed.

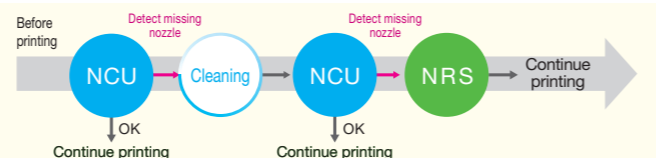
No drying time

The ink is instantly cured by UV irradiation, so you can start the next process (e.g. lamination) immediately after printing, without having to wait for the ink to dry.



NCU/NRS employed to monitor missing nozzles

The sensor automatically detects the condition of nozzles. When the NCU (Nozzle Check Unit) detects a missing nozzle, it automatically performs cleaning. If there is a nozzle problem left unsolved by the cleaning, NRS (Nozzle Recovery System) automatically replaces the defective nozzles with other nozzles, and enables users to continue their operation without waiting for service personnel.

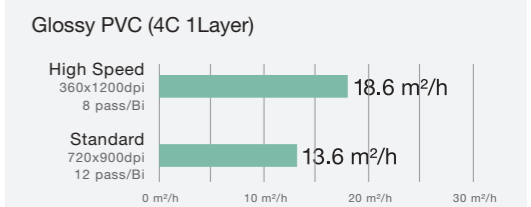
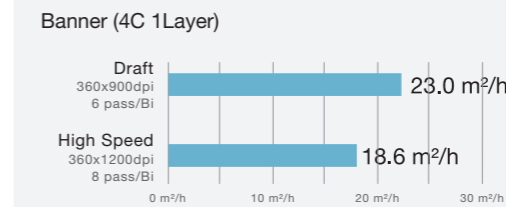


High productivity

Print speed

Banner 23.0 m²/h

Glossy PVC 18.6 m²/h



Ink set: 4C (CMYK)

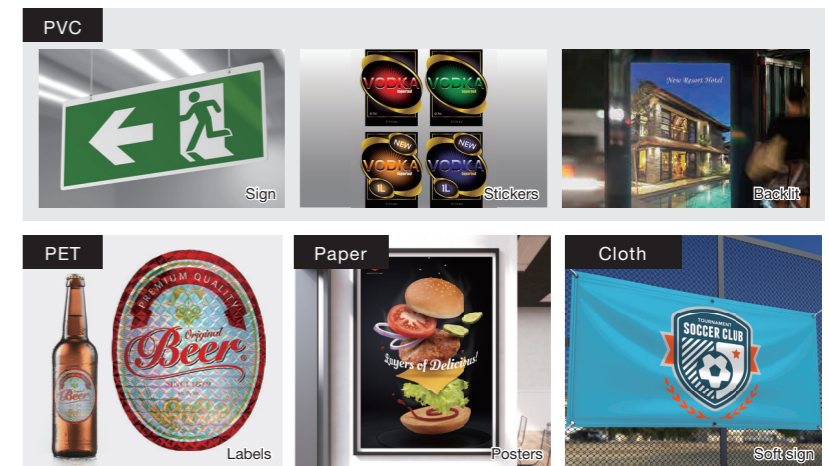
Reliable productivity that can respond to sudden requests of printing job with high-speed printing

More unique advantages of UV-curable inks

Unparalleled media versatility

In addition to PVC and banner, fabric and paper without ink receiving layer are possible to print, which are difficult to do with solvent or latex inks. Printing on PET film is also available.⁽²⁾ This unparalleled media versatility allows you to diversify your products.

²: Pre-evaluation is recommended.



White ink for high value-added print with diverse powers of expression

By applying white ink, it is possible to print on transparent media and colored media⁽³⁾ to obtain a wider range of expressions. Beautiful finishing of high density white ink gives an excellent printability for sign displays such as light box in stations and commercial facilities, window displays, indoor signs, decorations, POP displays, etc.

³: Applied to 2 layers printing but not applied to printing more than 2 layers such as 'White - Colour - White'

